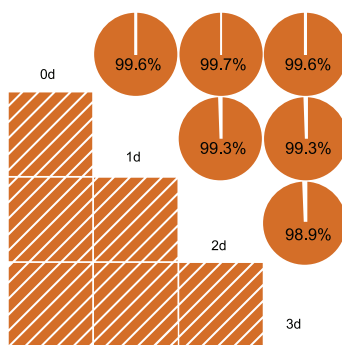


For Easy Collection and Preservation of Flora Fecal Samples

FloraPrep™ is a sample collection and preservation kit uniquely designed for the collection of flora samples. Supplies include tube filled with preservative and spoon attached to the cap for ease of use.

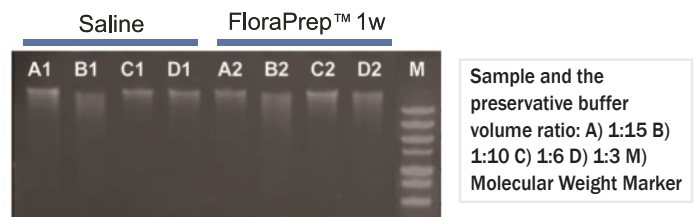
- Sample storage at room temperature effectively inhibits bacterial growth and nuclease activity to ensure stability of DNA
- FloraPrep™ preservation kit is compatible with most downstream molecular biology procedures and platforms.
- Collection and preservation is cost effective and easy to perform.
- Sample preservation conveniently allows for collection at different time points increasing opportunities for batching
- Optimized for flora analysis such as targeted 16S rRNA gene sequencing and metagenomic sequencing.

Storage Time Does Not Affect Flora Composition



Samples were extracted (0d), or initially stored at room temperature for one day (1d), 2 days (2d), and 3 days (3d). 16S targeted sequencing was then performed (FloraCheck™ testing services recommended). Flora composition information for each sample was calculated using the Pearson correlation coefficient demonstrating that FloraPrep™ storage time does not affect composition. Additionally, when storing samples out to 7 days, FloraPrep™ stored samples had a correlation coefficient of 97.9%.

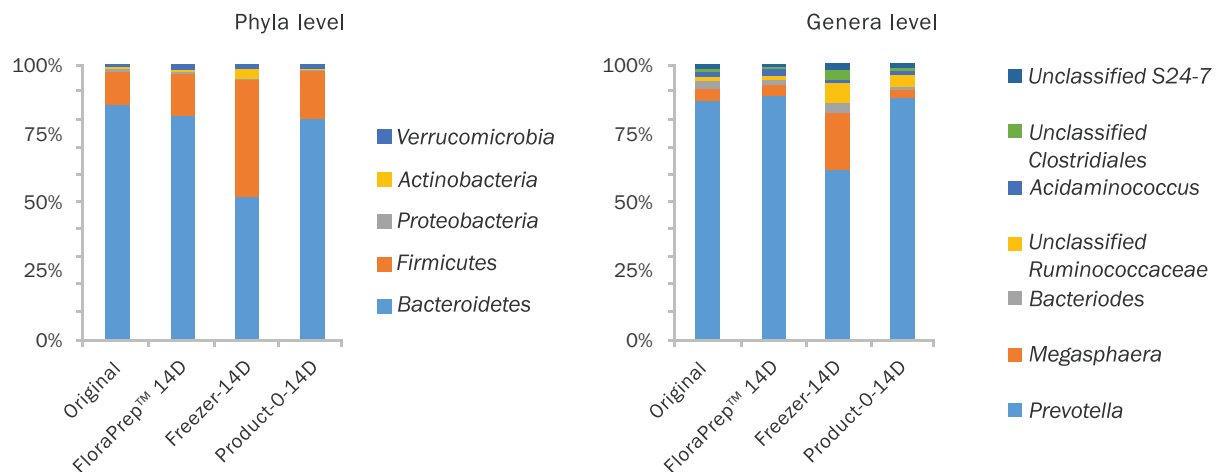
FloraPrep™ Preserves Nucleic Acid



Stool samples were collected and preserved with FloraPrep™ at different ratios. Prior to DNA extraction, samples were stored at room temperature for one week. Saline control samples were extracted immediately. Extracted DNA was subjected to gel electrophoresis analysis (100ng). Results demonstrate FloraPrep™ storage resulted in similar DNA integrity compared to saline control samples.

In a Real World Application, FloraPrep Preservation is Closer to Original Stool vs. Freezing and Leading Competitor at All Taxonomy Levels

FloraPrep™ preservation is closer to original stool sample compared to PBS or no preservation samples. Sample quality remains intact up to 14 days.



Samples were collected and stored (FloraPrep™, Frozen, Leading Competitor) for 14 days and then composition was compared to the original sample.